



# **Gespage**

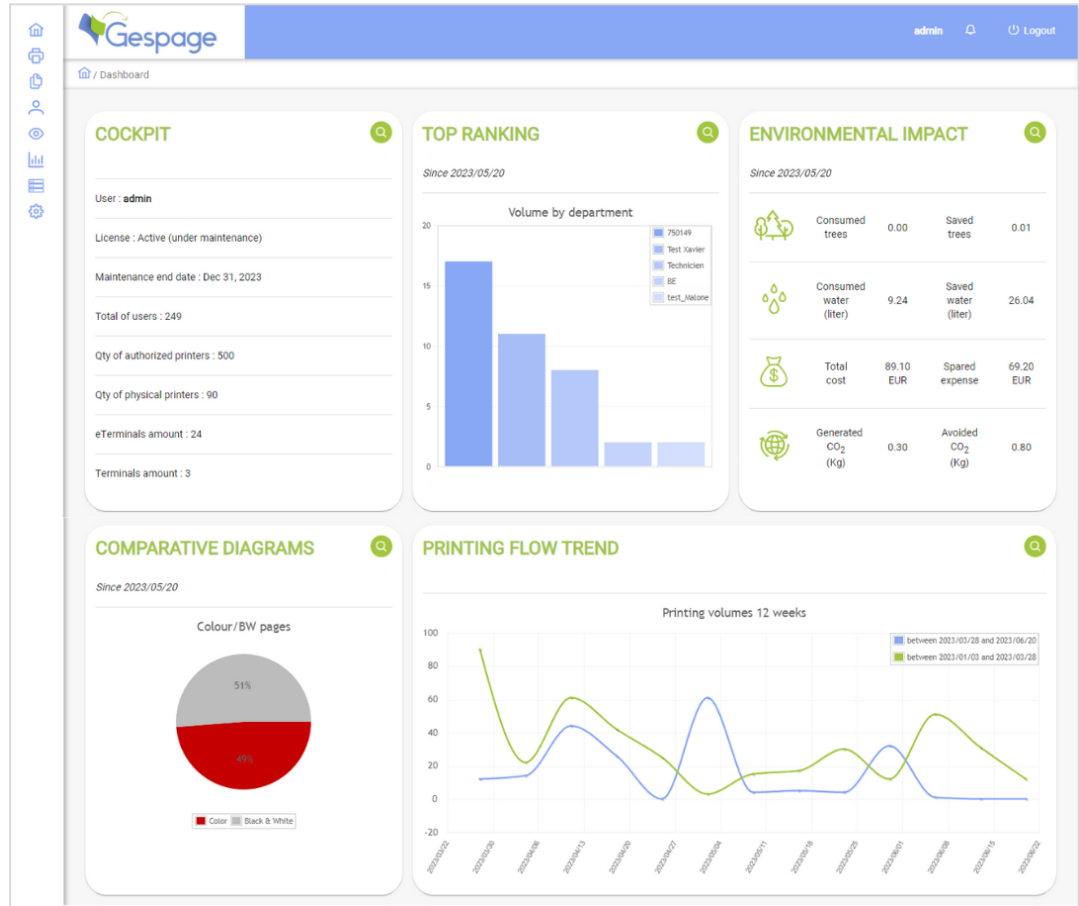
## **Release notes**



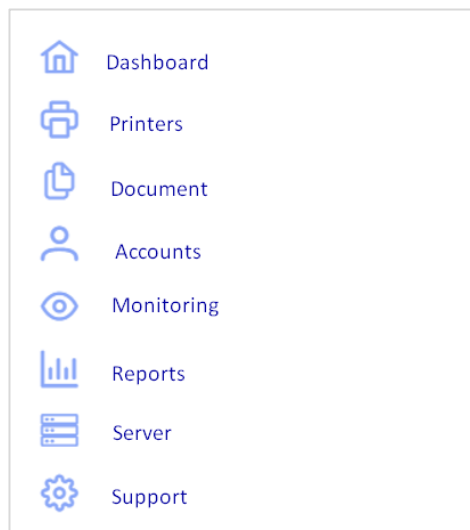
Version 9.0.0: 23<sup>rd</sup> August 2023

*New features*

- Admin interface
  - o New easy-to-use user interface for the administration




- o Minor modifications have been done into the menu's architecture:
  - The navigation is now offered from the menu on the left

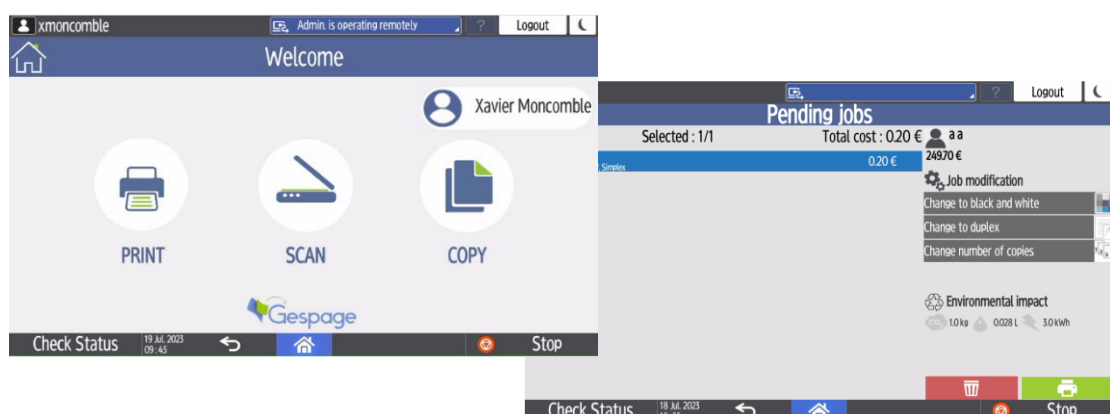


- The Document menu has been added to setup the mobile printing and scan parameters.

- Printers' management
  - o Gespage Direct Agent
    - The management of printers has been fully redesigned to distinguish printers from printer queues:
      - Multiple printer queues installed on different servers or computers and referencing the same MFP are now aggregated to a single printer device.
      - A single printer and eTerminal configuration can therefore be shared between multiple printers' queues.
      - The reports are referencing the printers, that can be aggregated from different printer queues.
    - This allows various new configurations:
      - Install print agents on user computers to get rid of print servers.
      - Share a common eTerminal between separate networks (ex: education and administration networks)
      - The standard management of printers through a print server remains of course possible.
    - The aggregation is done automatically based on printer queue's IP addresses:
      - From several printer queues referencing the same printer, the aggregation printer is called the 'Priority printer'.
      - By default, the 'priority printer' is the first queue referencing a printer that is registered on Gespage.
      - It is possible to manually modify the 'Priority printer' and to rename it.

<input type="checkbox"/>	Printer/Copier name ↑↓	Connected terminal ↑↓	Spool type ↑↓	Printer group ↑↓	Comments ↑↓	IP address ↑↓	Priority printer ↑↓	Queue
<input type="checkbox"/>	Copieur Salle de Formation	formation				10.0.0.63	<input checked="" type="checkbox"/>	34
<input type="checkbox"/>	PC_0112/Copieur Print2me					127.0.0.1	<input checked="" type="checkbox"/>	26

- eTerminals
  - o Gespage embedded applications
    - eTerminal Ricoh
      - Gespage Ricoh eTerminal v2.3.0
        - o New design of the user interface.
        - o Add advanced scan feature.
        - o Allow logo customization.
        - o See eTerminal release notes for further information.



- eTerminal Lexmark
  - Gespage Lexmark eTerminal v7.0.0.0
    - Allow logo customization.
    - Better support for latest models.
    - See eTerminal release notes for further information.
- Web eTerminals
  - The web eTerminals management has evolved to be more resilient to complex network architecture:
    - To do so, the eTerminals unique identifier has been moved from the device IP address to the device serial number.
    - For example, NAT traversal between the server and MFP is now supported.
  - The impacted eTerminals are the following:
    - eTerminal Brother
    - eTerminal Epson
    - eTerminal KM
    - eTerminal Sharp
    - eTerminal Toshiba
    - eTerminal Xerox
  - These changes do impact each eTerminal configuration. Please see the each eTerminal v9 manual for further details
- System
  - Upgrades to the technical stack:
    - PostgreSQL v15.2
    - Java OpenJDK v11.0.15
    - Payara v5.2022.4

#### *Bug fixes and small enhancements*

- eTerminals
    - eTerminal Epson
      - It is now possible to customize the Gespage MFP service user credentials.
    - eTerminal Kyocera
      - Gespage Kyocera eTerminal v1.7.4.0
        - Fixes linked to advanced scan customer journey.
        - See eTerminal release notes for further information.
    - eTerminal Sharp / eTerminal Toshiba
      - It is now possible to setup if the MFP certificate is checked or not (for server to MFP flows).
- | General parameters                                    | Advanced parameters |
|---|---------------------|
| SSL communication <input checked="" type="checkbox"/> |                     |
| Check device certificate <input type="checkbox"/>     |                     |
- Gespage scan
    - For scan to mail, it is now possible to setup a destination to the secondary user's mail.

- Hardware peripherals
  - o cBot
    - Add support for self-association of a card to an existing account.
    - Fix support in print options modification from cBot
  - o cPad-Pay
    - Embed firmware cPad-Pay v2.6.4.
- Printers' management
  - o When a printer queue is deleted, the printer's configuration remains available in Gespage. This allows the easily restore the printer's and eTerminal configuration on a new printer queue.
  - o Fix management of BW printing when color quota is exceeded on the user's service.
- Mobile printing
  - o Web printing: Hide mobile printers that are not allowed to the user.
  - o It is now supported to setup an advanced price profile on a cloud printer.
- Gespage Agent v9.0.0.0
  - o The installer is now also available with .msi format.
  - o SNMP monitoring: Add support for new range of MFPs.
  - o Improve Gespage agent startup delay.
- Gespage Remote
  - o In the users' synchronization process, some additional parameters of the user are now synchronized (email, home directory...)
- Admin interface
  - o A new menu for Gespage print agent's monitoring has been added.

LIST OF AGENTS			
<div>&lt;&lt; &lt; 1 &gt; &gt;&gt; 100 (1-59 / 59)</div>			
Computer name ↓↑	Last Status ↑↓	Last notification ↑↓	Version ↑↓
X3V7-PROD	10/29/23, 5:32:53 PM	9/25/23, 9:28:59 AM	9.0.0.0

- o In users' parameters menu, it is now possible to setup the random numeric code length.

Print code creation

☐ None  
☐ Same as user login  
☒ Random numeric code

Generated code length

6

- o For scan to mail, it is now possible to setup a maximum size for attachment (setup in SMTP parameters).

Limit for attachment size

127

MB

- o It is now possible to disable / enable the display of the Gespage App download links in the user interface.

- The admin web access roles have been adapted to the new menu structure (role added for the Document menu).
- In the license menu, the maximum number of allowed eTerminal is now displayed.

Terminals	Mode	Details	Date	Number of devices
Konica Minolta eTerminal	Active (under maintenance)		30 juin 2024	2 / 10

- Reports
  - Fix content of some reports sent through automatic tasks.
- Installation
  - After installation, Gespage printing mode will now be setup by default in level 2 (management of user's balance).
  - The Gespage installer is now unique on Windows whatever the required eTerminal.
- Miscellaneous
  - Minimum TLS allowed by Gespage is now setup to TLS 1.2
  - Add new languages: Italian, Portuguese

#### *Upgrade information (v8 > v9)*

- Installation
  - Before upgrade, Gespage must be up to date with latest Gespage v8 version (v8.2.7)
  - A migration procedure must be followed to upgrade from v8 to v9.
  - The migration impact is depending on the eTerminal brand.
  - The migration procedure is available in Gespage knowledge base.
- Licenses
  - Xerox eTerminal and Gespage web payment licenses must be reinstalled after migration to be compatible with their new format.

#### *Information notes*

- Following functions are not yet available on Gespage v9.0.0
  - eTerminals
    - eTerminal Xerox
      - No access rights can be setup.
      - The Xerox eTerminal model feature is not yet available.
  - Mobile printing
    - Gespage App for print jobs submission is not yet available.
  - Cloud connector
    - Google Drive connector is not yet available.
  - Client application
    - Gespage Pay Station is not yet available.
- Following functions have been removed due to deprecation.
  - eTerminals
    - Removed eTerminals: OKI, Samsung, and Toshiba v1.
    - eTerminal Sharp: Remove support for browser Netfront <= 3.5
  - Hardware peripherals
    - Removed peripheral: CMI and cMDB.
  - Advanced Scan

- Custom incoming flows and SMTP Gateway have been removed.
- User interface
  - Gespage Mobile Drive (Gespage document storage feature) has been removed.
- Mobile printing
  - It is no more possible to access from the eTerminal to the list of mobile documents by entering a document code (used to be possible on eTerminal Toshiba or Xerox).
- Miscellaneous
  - Copier-only device has been removed.
  - Gespage LDAP gateway has been removed.
  - iPDM feature has been removed.
  - Manual CSV import menu has been removed. CSV import remains available through the Tasks feature.

*Known issues*

- eTerminal Sharp
  - Sharp BP models support is partial in Gespage 9.0.0