



# **Gespage eTerminal Epson**

**Manual**



# Table of contents

---

<b>1. Introduction.....</b>	<b>5</b>
1.1 Compatibility .....	6
<b>2. Configuration.....</b>	<b>7</b>
2.1 MFD Configuration .....	7
2.1.1 Product key registration.....	7
2.1.2 Epson Open Platform activation .....	8
2.1.3 Driver configuration .....	8
2.1.4 Gespage eTerminal activation.....	10
2.1.4.1 Access control.....	11
2.1.4.2 User access configuration.....	12
2.1.4.3 Card reader .....	13
2.2 Gespage configuration .....	13
2.2.1 General.....	13
2.2.1.1 Global parameters .....	13
2.2.1.2 Networks flows .....	14
2.2.2 Create eTerminal.....	14
2.2.3 eTerminals general configuration .....	16
<b>3. Use .....</b>	<b>19</b>
3.1 Examples of user menus .....	19
3.1.1 User login .....	19
3.1.2 Choice of function .....	23
3.1.3 Release of prints.....	23



# 1. Introduction

---

Epson eTerminal is a Gespage software module dedicated to Epson MFDs. This module uses the integrated touch screen of the MFD.

This module enables an authentication at the MFD to provide the following functions:

- Secured release at the printer (Print2me)
- Tracking of the copying and scanning
- Functionality of scan to me
- Access rights limitation to the MFD functions.

Authentication on the MFD may be carried out by keypad or card.



## 1.1 Compatibility

Gespage eTerminal is compatible with MFDs fitted with 4.3", 5" and 9" touch screens and featuring Epson Open Platform technology.

When the MFD is compatible with Epson Open Platform, the "OP" label should be printed on the carton box or on the MFD.



MFDs compatible with Epson Open Platform may require a firmware upgrade to enable the function.

For detailed information about supported models, it is recommended to consult **CartadisDB** tool.

The card readers that can be connected are Cartadis card readers such as TCM3 or TCM4.



# 2. Configuration

---

## 2.1 MFD Configuration

### 2.1.1 Product key registration

This operation has to be done by an Epson or Gespage technician.

Epson devices with Epson Open Platform need to be activated using a product key.

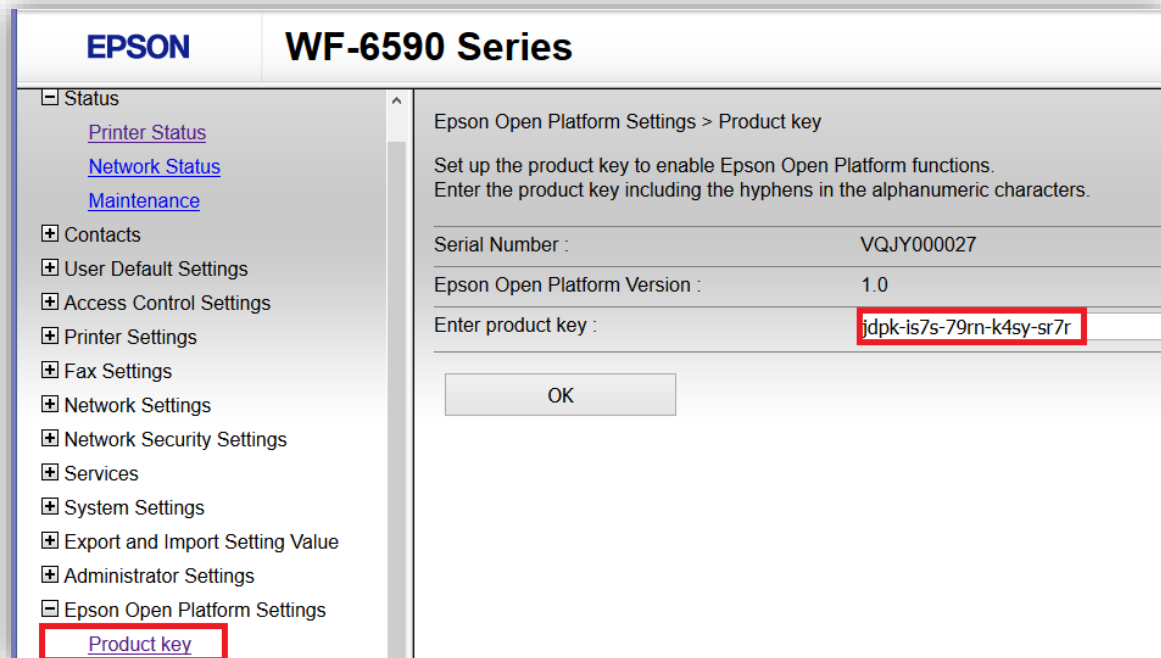
1. Access to the following web site from a computer and fill-in the blank fields :  
<https://openplatform.epson.biz/license-op/inputInformation.html>
2. Enter the device serial number in the field « Enter manually ».
3. Select an answer in the « Introduction destination information ».
4. Click « Next » and then « Issue » to get your product key. You can save it by clicking on « Export CSV » to download the content displayed on the screen in CSV format.

For management of a large number of devices, it is recommended to use Epson Device Admin provided by Epson.

### 2.1.2 Epson Open Platform activation

On a computer, open your web browser and then open the Epson device's web interface by entering: <http://device-ip>.

If an administrator account is set, then you have to log as an admin to access the next feature.



Enter the product key saved in your CSV file and then click « ok ».

The device is going to reboot to end the process and the Epson Open Platform will be activated on the MFD.

### 2.1.3 Driver configuration

Epson driver has to be install in PCL6 to work with Gespage. ESC/PR. ESC/PR is not supported by Gespage.

There are two ways to install Epson driver:

- Via setup.exe:

Just follow the instructions, the driver will automatically be in PCL6.

- Via .inf:

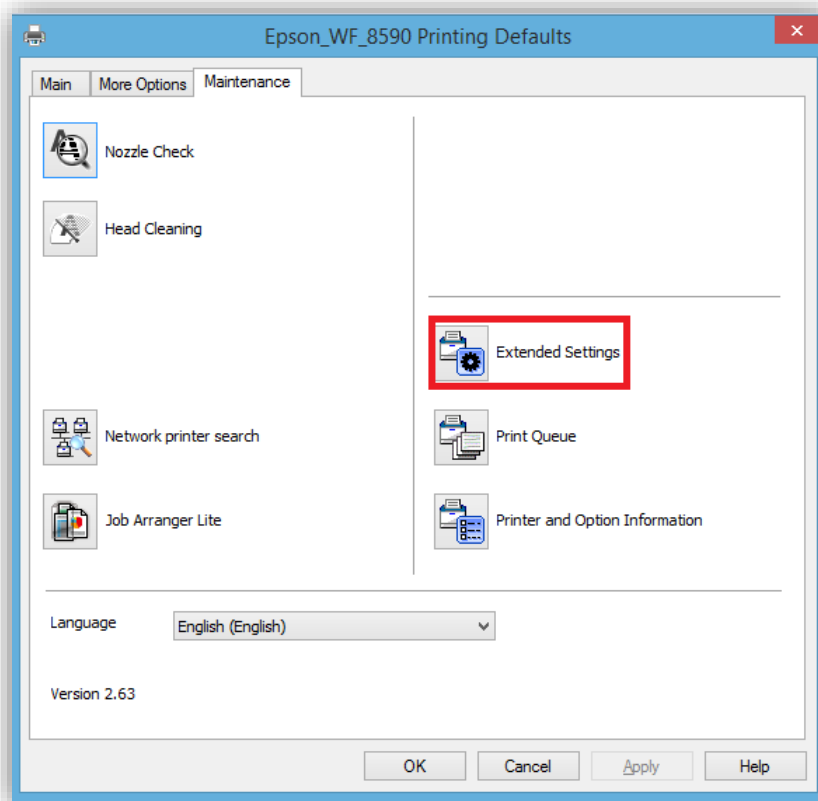
After installation, there is a checkbox to check at the bottom of the driver window to set in PLC6.

If your driver is already in ESC/PR, it is possible to set it in PCL6 by following theses instructions:

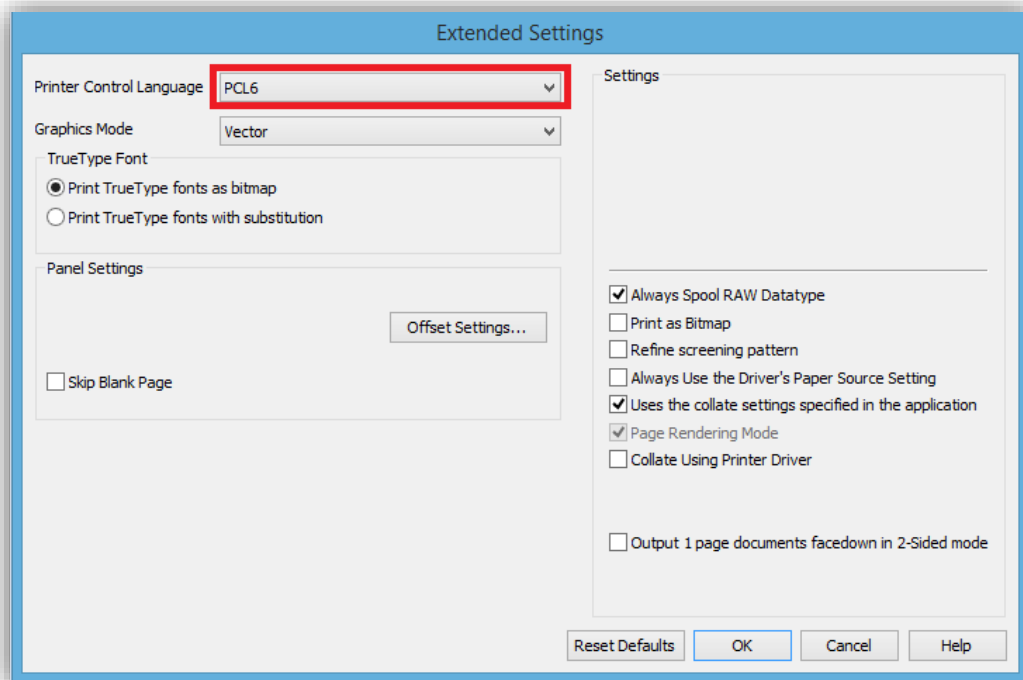
- In the device and printer menu, right click on your printer and click on "printer properties"
- Open Preferences



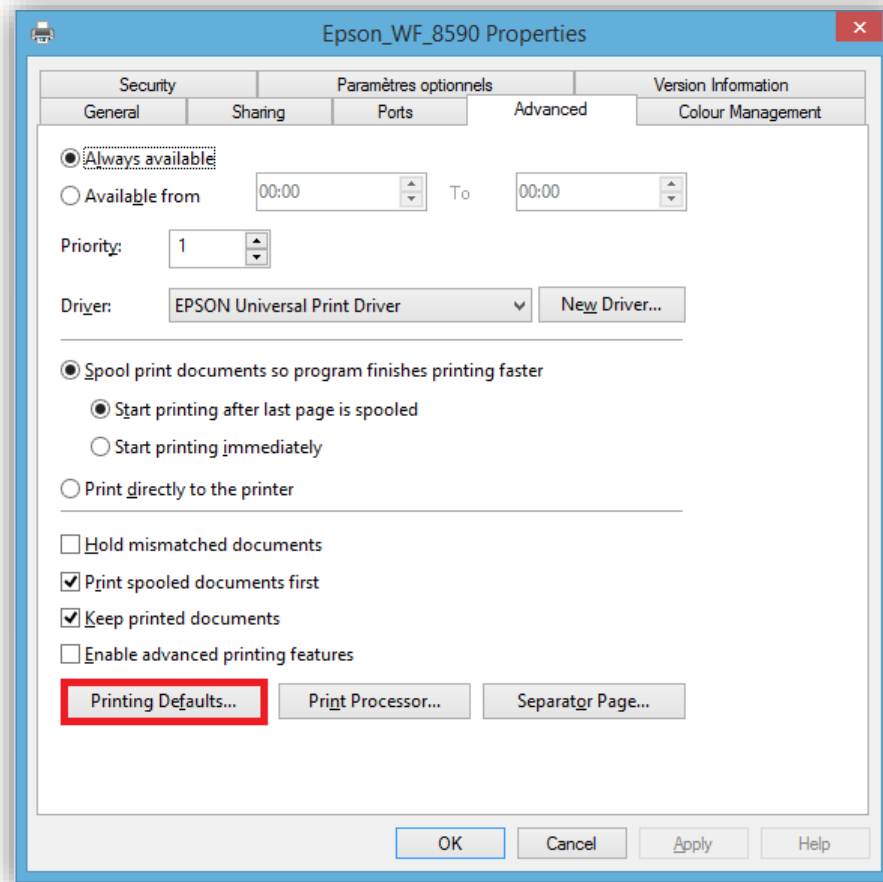
- Click on “Extended Settings” in the Maintenance tab



- Then set PCL6 for “Printer Control Language” and validate



- Then do the same in “Printing Defaults” located in the “Advanced” tab of the printers properties



### 2.1.4 Gespage eTerminal activation

Before configuring the MFD, the printer matching your MFD should be configured on your Gespage server (see § 2.2.2).

When configuring your MFD via the web interface, it is recommended to check that the MFD is not turned off or on standby and that nobody is logged in on it.

On your web browser, open the Epson device's web interface and go to Epson Open Platform Settings -> Authentication System -> Basic.

**EPSON WF-6590 Series**

EPSON Open Platform Settings > Authentication System > Basic

You can set or confirm the server connected from Epson Open Platform. Refer to the manual for Authentication System settings.

**Primary Server**

Web Page URL Before Login : <http://10.0.100.14:7180/device/embedded/epson/ISV>

Web Page URL After Login :

Access Token : 10.0.182.31

Notification URL : <http://10.0.100.14:7180/device/embedded/epson/ISV>

Notification Timeout (sec) : 10

**Secondary Server**

Web Page URL Before Login :

Web Page URL After Login :

Access Token :

Notification URL :

Notification Timeout (sec) : 10

**Web Page URL Before Login:** Enter the following address:  
[http://server\\_address:server\\_port/device/embedded/epson/ISV](http://server_address:server_port/device/embedded/epson/ISV)  
 (replace server\_address by your Gespage server address and server\_port by your server port (7180 by default))

**Access Token:** Enter Epson MFD ip.

**Notification URL:** Enter the following address:  
[http://server\\_ip\\_address:server\\_port/device/embedded/epson/ISV](http://server_ip_address:server_port/device/embedded/epson/ISV)  
 (replace server\_address by your Gespage server address and server\_port by your server port (7180 by default))

#### 2.1.4.1 Access control

On your web browser, open the Epson device's web interface and go to Access Control Settings -> Basic.

**EPSON WF-6590 Series**

Access Control Settings > Basic

☒ Enables Access Control

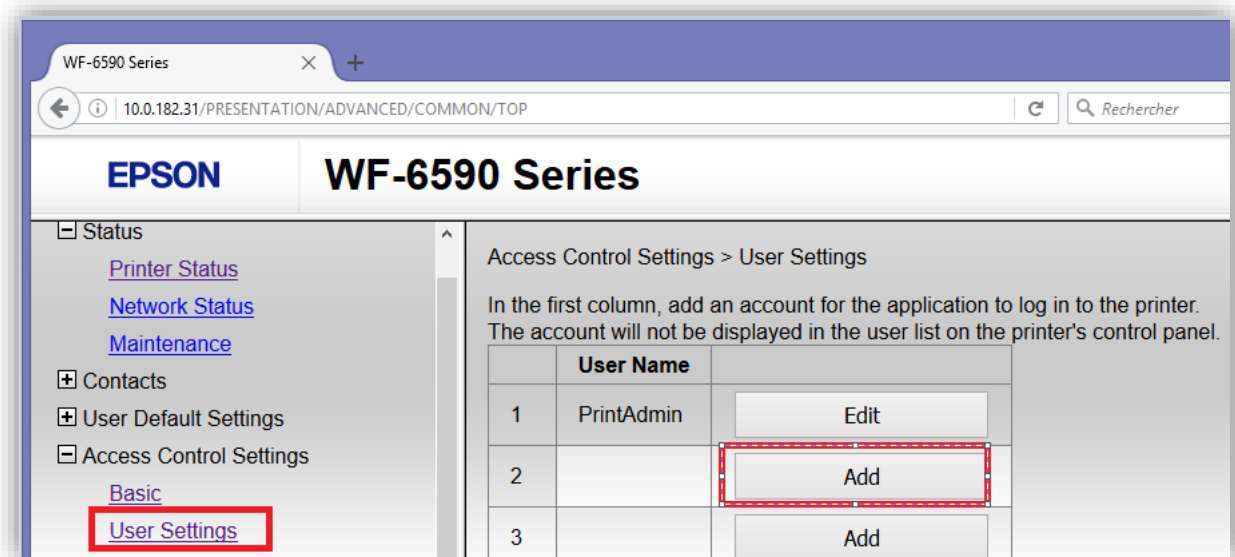
☒ Allows printing and scanning without authentication information

OK

« Enables Access Control » has to be checked to activate the accounting on Gespage.  
 « Allows printing and scanning without authentication information » has to be checked to allow the users to print.

### 2.1.4.2 User access configuration

Now that the access control is activated, we have to create a Gepage user to be able to use the device functionality. In order to do that, go to Access Control Settings -> User Settings



We need to create a new user to authorize Gepage to manage the rights of access. Click on « add »

Access Control Settings > User Settings

Number : 2

User Name : Enter between 1 and 14 alphanumeric characters.

Password : Enter between 0 and 20 characters.

Select the check box to enable or disable each function.

- ☒ Copy
- ☒ Scan
- ☒ Fax
- ☒ Print from Memory Device
- ☒ Print from Computer
- ☒ Color Print

Apply Delete Back

Username: Gepage

Password: 123456

All the function have to be checked to let gepage manage the rights of access.

**Be careful, « Gepage » and « 123456 » for the username and the password can't be changed. If another value is set, it won't work.**

### 2.1.4.3 Card reader

VID and PID of your card reader must be set in the device otherwise it's possible that your Epson device won't recognize your card reader. To do that, go to System Settings -> Card Reader.

The screenshot shows the Epson WF-6590 Series configuration interface. On the left is a sidebar menu with options: Status, Contacts, User Default Settings, Access Control Settings, Printer Settings, Fax Settings, Network Settings, Network Security Settings, Services, and System Settings. Under System Settings, there are links for Power Saving, Control Panel, External Interface, Country/Region, and Card Reader (which is highlighted with a red box). The main area is titled 'System Settings > Card Reader'. It contains instructions: 'Enter Vendor ID and Product ID only when you want to limit the card re' and 'Enter the operational parameter only when a special control is necessa'. Below this are input fields for 'Vendor ID' (containing '0816', highlighted with a red box), 'Product ID' (containing '0023', highlighted with a red box), and 'Operational parameter'. A 'Next' button is below the fields. At the bottom, there is a note: 'You can check the card reader connection and the card reading result. 1. Hold the card over the card reader. 2. Click [Check].'

For TCM3-13.56:

Vendor ID: 0816

Product ID: 0023

For TCM3-125:

Vendor ID: 0816

Product ID: 0013

If you need any help to fill these values you'll have to contact a Gespage technician.

## 2.2 Gespage configuration

### 2.2.1 General

#### 2.2.1.1 Global parameters

Make sure that the licences wished are available. From *Server / Support / Licence*, information about your Gespage Server and the licenses bought are available. An eTerminal can be installed only if you have the Epson eTerminal associated license or if your server is in demo mode.

View licence				
License				
Signature	[REDACTED]			
Mode	Active (no maintenance)			
Maintenance end date	Aug 31, 2015			
Qty of printers	50			
Qty of physical printers	12			
Terminals	Mode	Details	Date	Number of devices
Konica Minolta eTerminal	Active (under maintenance)		Jan 31, 2020	10
Sharp eTerminal	Active (under maintenance)		Jan 31, 2020	10
Ricoh eTerminal	Active (under maintenance)		Jan 31, 2020	10
Lexmark eTerminal	Active (under maintenance)		Jan 31, 2020	10
Kyocera eTerminal	Active (under maintenance)		Jan 31, 2020	10
Brother eTerminal	Active (under maintenance)		Jan 31, 2020	10
Epson eTerminal	Active (under maintenance)		Jan 31, 2020	10

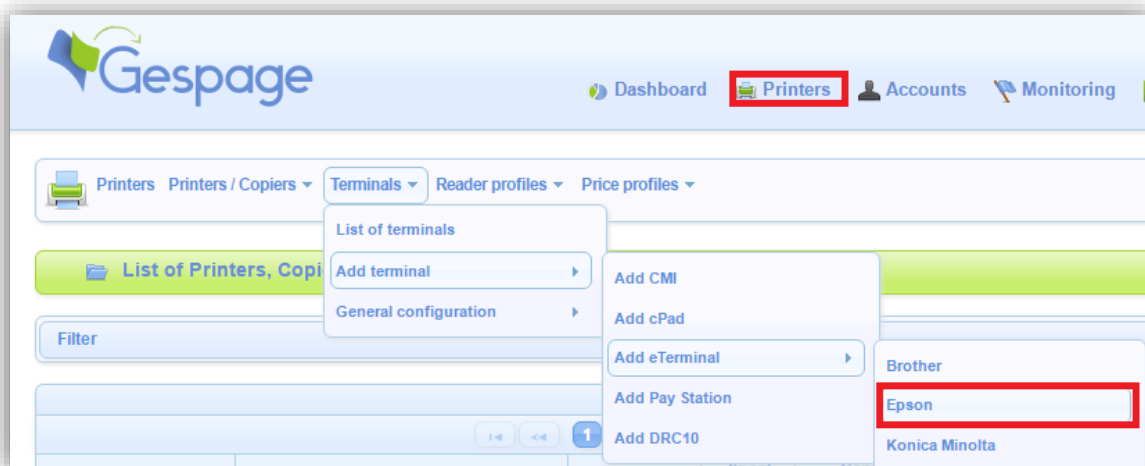
After supply, a new licence is saved by just uploading and validating.

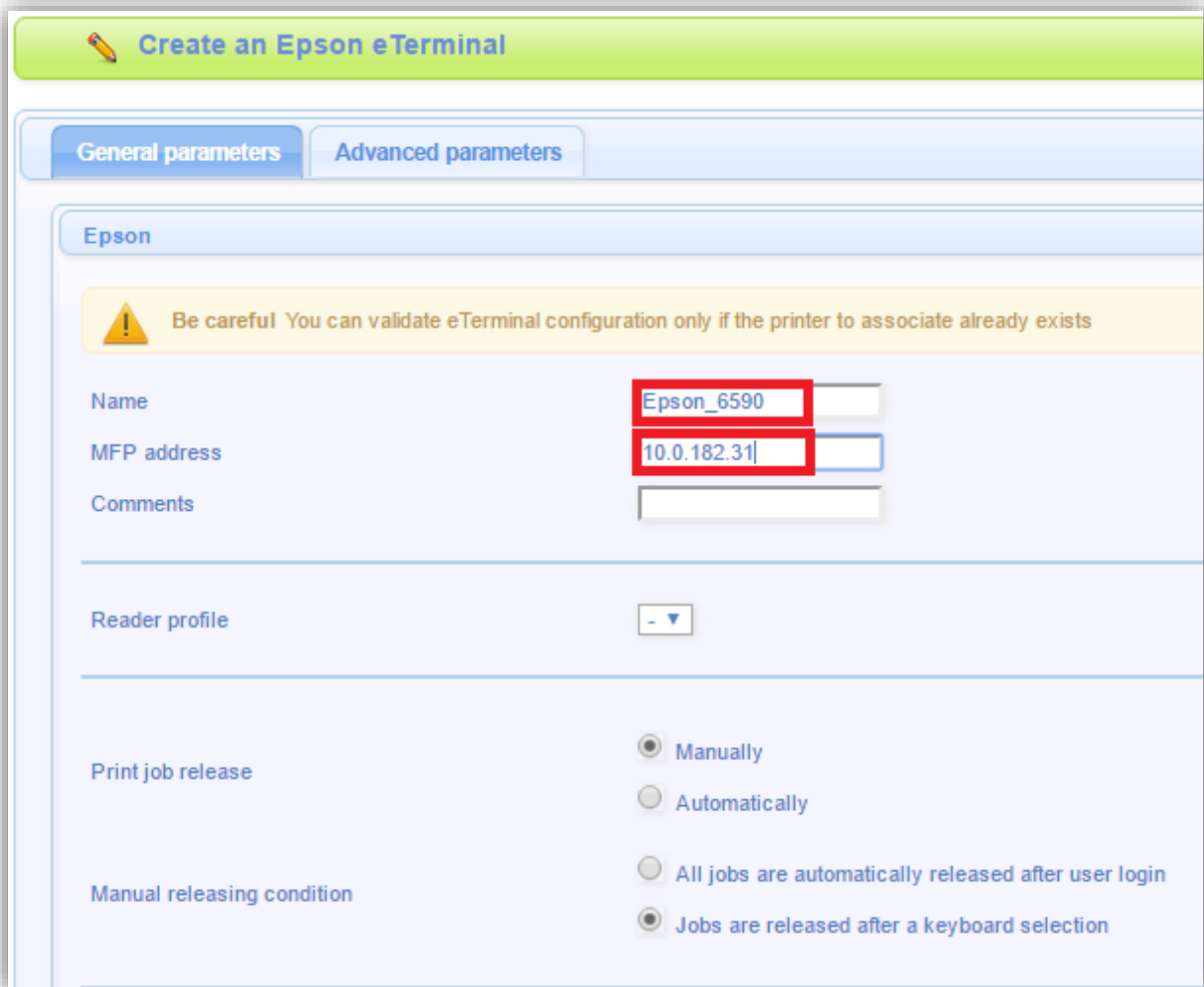
### 2.2.1.2 Networks flows

Epson eTerminal communicates with Gespage service on the TCP ports 7180 (default).

## 2.2.2 Create eTerminal

Epson eTerminal has to be created on Gespage server. By moving to *Printers/ Terminals / add terminal / add eTerminal / Epson* you'll be able to create an Epson's eTerminal.






**Create an Epson eTerminal**

**General parameters** | Advanced parameters

**Epson**

 **Be careful** You can validate eTerminal configuration only if the printer to associate already exists

Name:

MFP address:

Comments:

Reader profile:

Print job release: ☒ Manually ☐ Automatically

Manual releasing condition: ☐ All jobs are automatically released after user login ☒ Jobs are released after a keyboard selection

**Name**

The name of the Terminal must be filled in. The name is free but 2 identical names cannot be entered.

**MFD address**

The ip address of the eTerminal.

**Comments**

Comment of the eTerminal in Gespage. Comments are optional.

**Reader profile**

Name of a reader profile associated with the card reader (see Gespage manual).

The reader profile is an advanced setting useful when non-standard card readers have to be connected or when the numbers of the cards stored on Gespage do not match the standard format.

**Print job release**

Indicates whether printings sent to the MFD are locked as long as the user is not identified.

- 1. Manually (Print2me function)**

The user must always identify himself to release his documents. This is the configuration to choose for getting a secured printing.

- 2. Automatically**

The documents are printed as soon as they are received if the user's credit is sufficient, they are nevertheless accounted.

Manual releasing condition

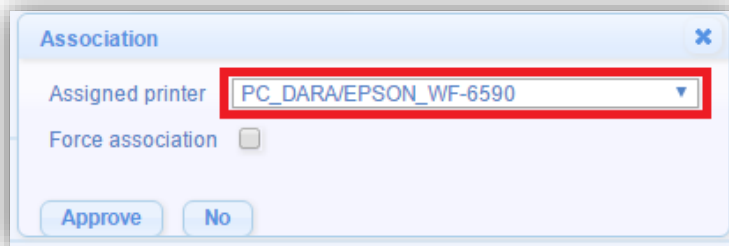
In case of manual release of printings, this parameter indicates whether all printings are automatically released or the user can select the ones that he wishes to release.

- 1. All jobs are automatically released after user login**

After authentication of the user, all pending prints will be released.

- 2. Jobs are released after a keyboard selection**

Once the user is identified, a scrolling list shows to the user all his printings in the queue and the opportunity of their release is proposed to him.



To finish the creation you have to associate the eTerminal to the corresponding machine.

### 2.2.3 eTerminals general configuration

In the Epson eTerminals general configuration, set up the parameters to be applied to all Epson eTerminals on the site



Among these parameters, there are:

- The type of login allowed,
- The method for cards association.



These parameters are described hereafter, modifications are taken into account by eTerminal every 3mins without login.

#### For a keyboard login

Parameters dedicated to a user login on the keyboard.

*Input of Gespage account only:* The user will only enter his Gespage login.

*Input of account and password:* The user will enter his Gespage login and his password.

*Input of the print code:* The user will enter his print code.

#### Allowed logins

This parameter is used to select the peripheral for login.

##### **1. Card and keyboard**

The user login can be done by card or keyboard. If no card reader is connected, keyboard login is the only option.

##### **2. Card only**

The keyboard will be disabled. The MFD will only use the card reader peripheral to log the user.

##### **3. Keyboard only**

The card reader peripheral will be disabled. Keyboard login is the only option.

TCM3 contactless card reader is advisable:



Readers of contactless or proximity cards, compatible with most of the cards on the market in 13.56 Mhz or 125Khz technology.

Connectable to cPad, CMI or embedded modules.

**NOTE:** TCM3 can be directly connected in USB on the MFD.

Association card ID to user

At the first user's card use and if the card number is not known by Gepage, a method of association of the card must be defined. It enables the number of the user's card to be stored in Gepage account. This association only applies at the first card insertion.

**1. Done by the users**

When a user will use an unknown card, he will have the possibility of identifying on the keyboard at the login screen. The card self-association will be required only once during the card life time.

**2. Done by the administrator**

All card numbers of users have to first be configured in Gepage. The initialization can be carried out by the administrator or by the LDAP synchronization mechanism.

# 3. Use

---

## 3.1 Examples of user menus

### 3.1.1 User login

The user must identify himself to access to the MFD services. After identification, the user has a direct access to his pending prints, he has to go to « Home » for moving to another service.



Disconnection is made by pushing the « Home » button when the user is on the « Home Screen » of the device.

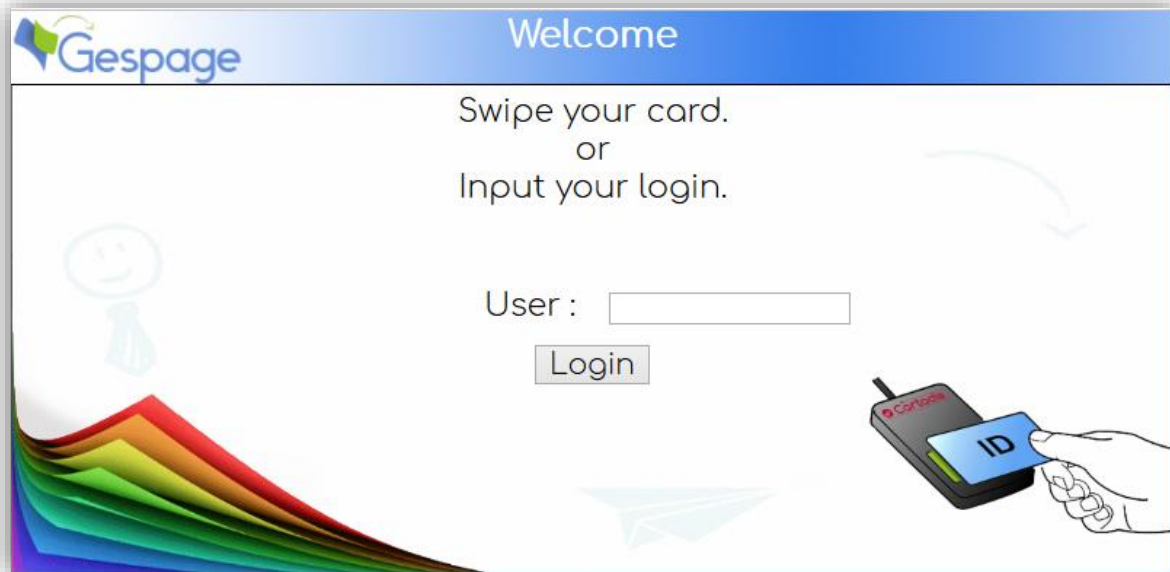
Home Screen with multiple identification choices:



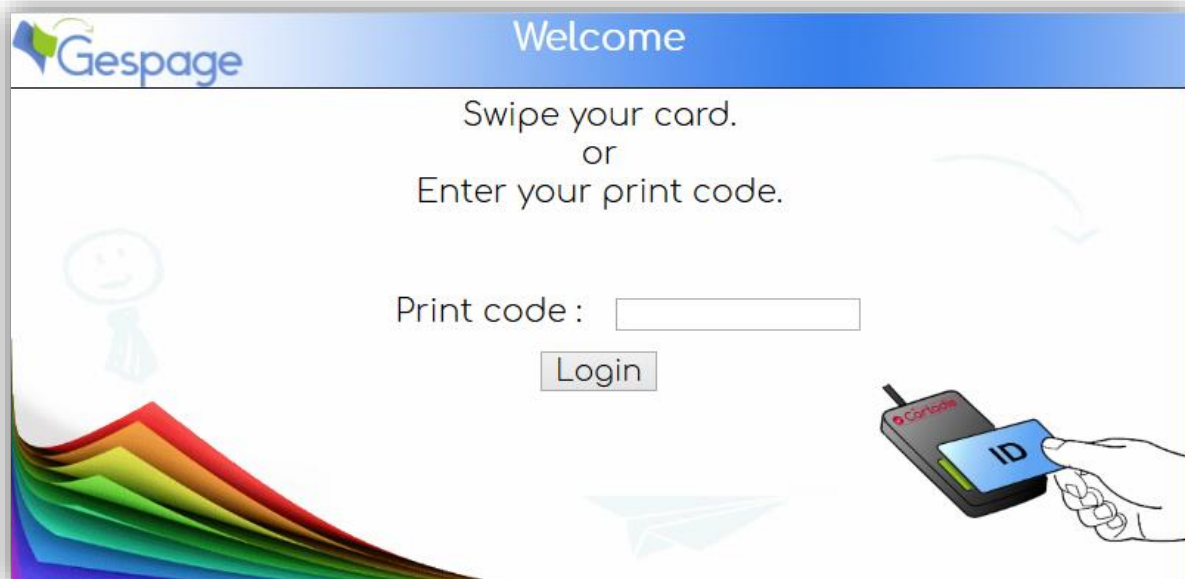
Home Screen with identification by user name and password:

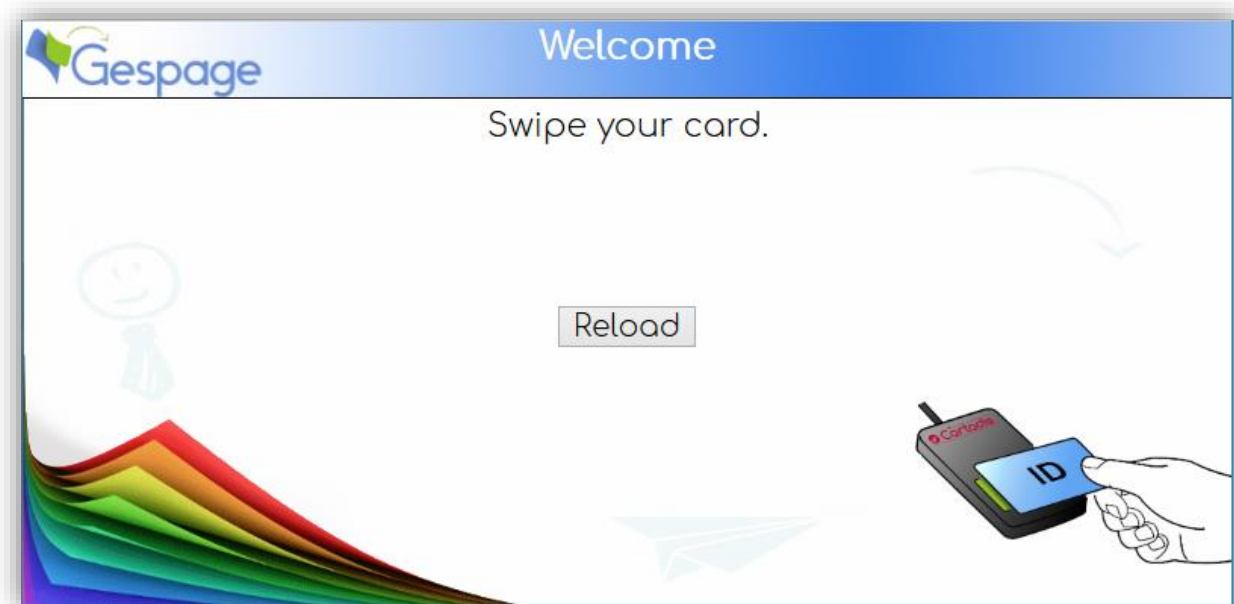


Home Screen with identification by card or user name:

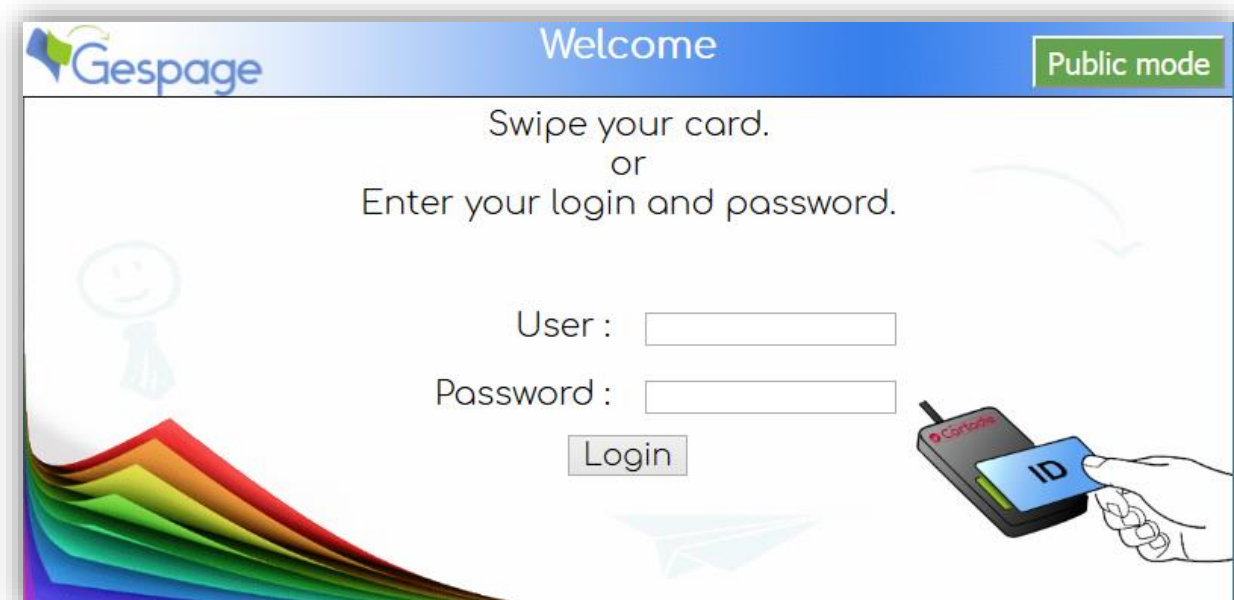


Card and Print code login:



Card login:

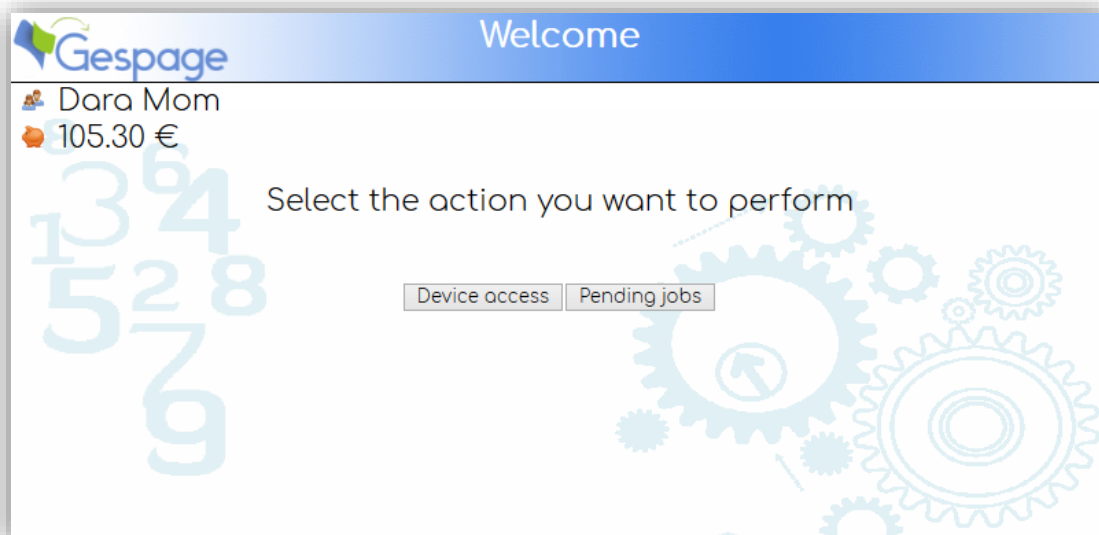
When the card login is selected, the logo with the hand and the contactless card is displayed. If not, it means that the login can only be done via the keyboard.

Home screen with public access:

A public access may be enabled for accessing certain functions of the peripheral without user login. It is made by using the *Public* button.

### 3.1.2 Choice of function

When the connection is activated, an intermediate screen gives access to the native functions of the machine (scan, copies ...) or pending prints.



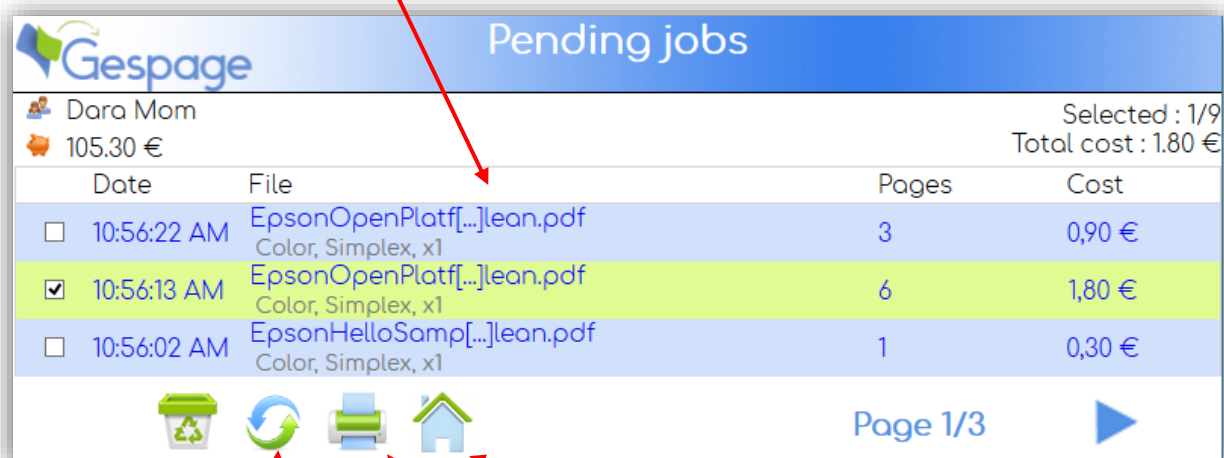
### 3.1.3 Release of prints

Pending prints can be printed or deleted from the screen for release of prints.

At Login, all pending print are preselected.

Print session:

To select / deselect pending prints, click on the line wished.



Deletion of the prints selected

Page refresh

Printing of the documents selected

Home  
(Access to Epson menus)