



# **Gespage eTerminal**

**CANON**

Manual



# Table of contents

---

<b>1</b>	<b>Introduction.....</b>	<b>5</b>
1.1	Compatibility.....	6
<b>2.</b>	<b>Configuration.....</b>	<b>7</b>
2.1	MFP configuration.....	7
2.1.1	Generation of Canon application licences .....	7
2.1.2	Creation of an administrator login .....	8
2.1.3	Adding a card reader.....	9
2.1.4	Enabling AMS .....	10
2.2	Installation of the Gespage application .....	10
2.2.1	Manual installation .....	10
2.3	Configuration of the application.....	13
2.3.1	Gespage address .....	13
2.3.2	Technician access to the MFP .....	15
2.4	Gespage configuration .....	15
2.4.1	General configuration .....	15
2.4.1.1	Global parameters .....	15
2.4.1.2	Licences.....	16
2.4.1.3	Network flows.....	16
2.4.2	Configuration of an eTerminal .....	16
2.4.3	General configuration of the eTerminal.....	18
<b>3.</b>	<b>Use .....</b>	<b>21</b>
3.1	Examples of user menus .....	21
3.1.1	User login .....	21
3.1.2	Screen of print release .....	25
3.1.3	Scan to personal e-mail .....	26



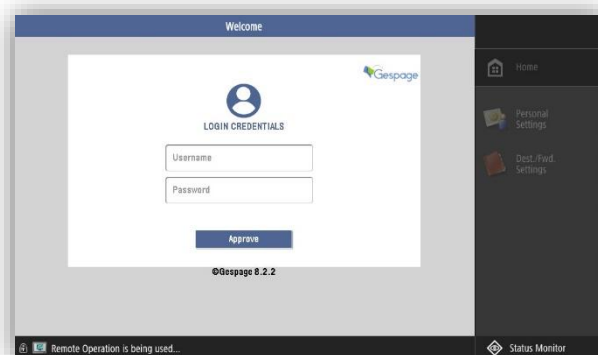
# Introduction

---

The Canon eTerminal is a Gespage software module dedicated to Canon MFPs. This module uses the integrated touch screen of the Canon MFPs.

This module enables an authentication at the MFP to provide the following functions:

- Print2me secured print with user authentication (by login / password, PIN code, card) and user-friendly selection of the documents to print.
- Modification of the job properties (print forcing in B&W, in duplex, change of the number of copies).
- Scan to me by email.
- Payment and accounting on Gespage server of prints (including USB), copies and scan.
- Access rights to copy, print (B&W, colour) functions and scan.
- Management and configuration of the terminal from a user-friendly Web interface.



## 1.1 Compatibility

Canon eTerminal is compatible with all Canon MFP generation 3 or higher (Meap platform).

Canon MFPs must be upgraded with **the latest firmware version**.

For detailed information about supported models, it is recommended to consult **CartadisDB** tool.

The card readers that can be connected are Cartadis card readers such as TCM3 or TCM4.



## 2. Configuration

---

### 2.1 MFP configuration

Before creating the eTerminal, the corresponding printer queue must be created on your print server.

#### 2.1.1 Generation of Canon application licences

In order to allow the installation of Gespage application, the MFPs must be fitted with the appropriate Canon licences (one for the Meap application **Gespage**, one for the advanced system application **GespageLogin**).

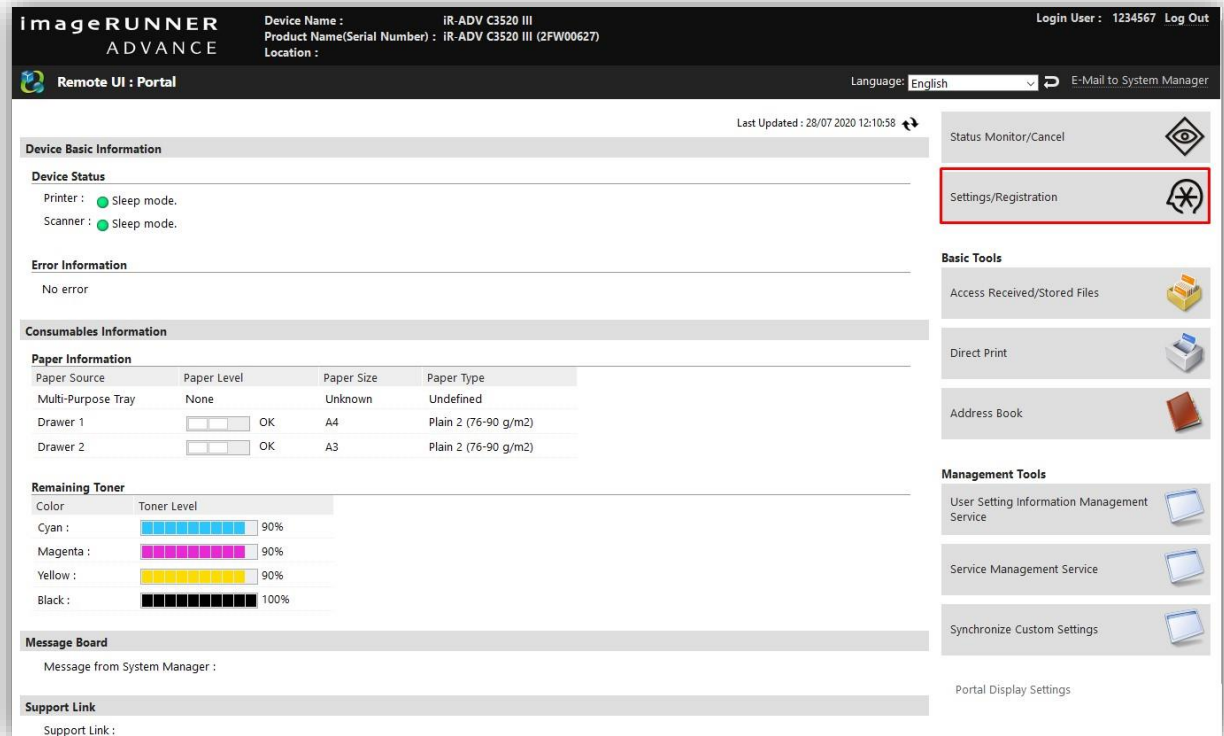
To obtain these licenses, multifunction serial numbers, on which Gespage is going to be installed, must be sent by mail to Gespage support.

## 2.1.2 Creation of an administrator login

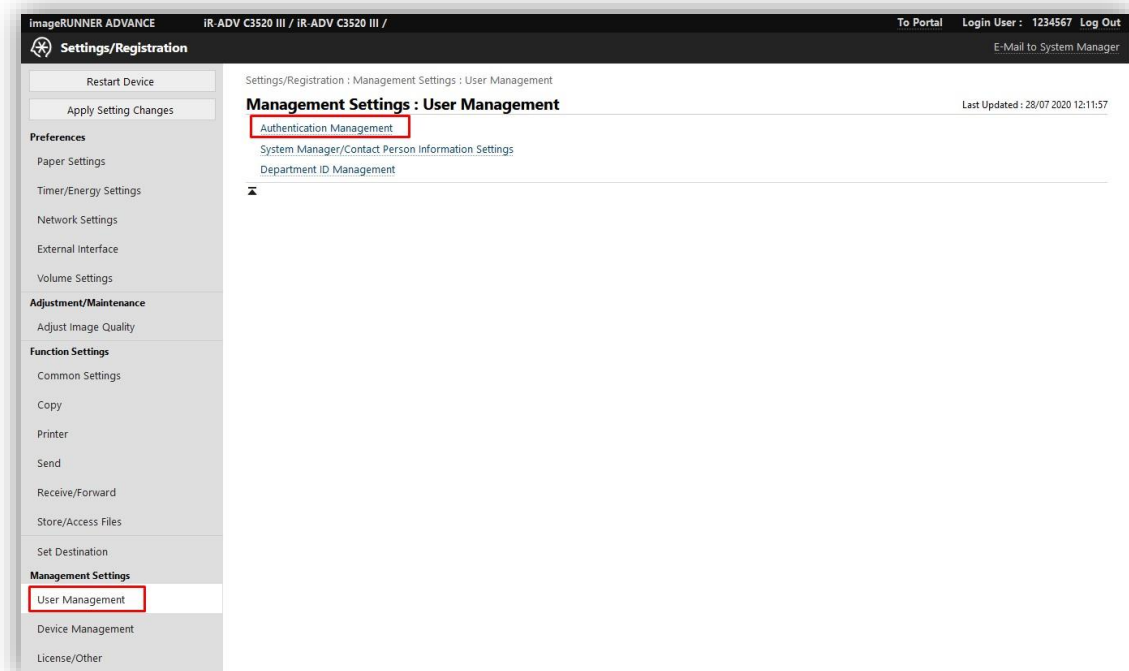
**Attention! It is mandatory to do this configuration before to install Gespage application.**

An MFP administrator access is required to allow configuration of an embedded application.

To create an administrator access, you must access to the web interface of the copier then select *Settings / Registration*:



then *User management* and *Authentication Management*:





Then click on *Add user*, create a name then a password.  
You should also think about defining the user with the *Administrator* role.

The screenshot shows the 'Add User' form in the Authentication Management interface. The form is divided into several sections:

- Authentication Information:** This section is highlighted with a red box. It contains fields for 'User Name' (value: 1234567) and 'Password' (masked with dots). Both fields have a maximum character limit of 32.
- Keyboard Authentication:** This section contains a 'Confirm' field.
- User Information:** This section contains fields for 'Displayed As', 'E-Mail Address', and 'Icon'.
- Department ID Settings:** This section contains a 'Department ID' field, which is currently 'Not set'.
- Role Settings:** This section is highlighted with a red box. It contains a 'Select Role to Set' dropdown menu, which is currently set to 'Administrator'.

### 2.1.3 Adding a card reader

If a card reader must be added on the multifunction, some parameters must first be enabled.

To do this, move to the *Settings/Registration* menu then, from *Preferences: External interface*, check that the *Use as USB Device* and *Use MEAP Driver for USB Input Device* boxes are checked.

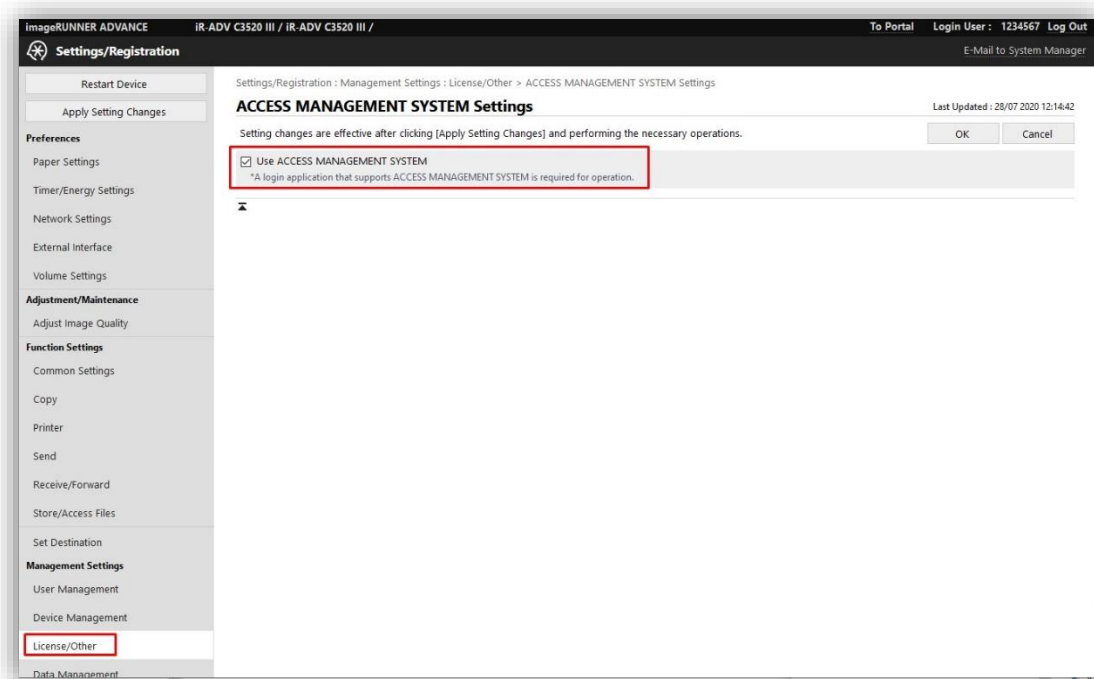
The screenshot shows the 'USB Settings' form in the Settings/Registration interface. The form is divided into several sections:

- Preferences:** This section is highlighted with a red box. It contains checkboxes for 'Use as USB Device', 'Use MEAP Driver for USB Input Device', 'Use MEAP Driver for USB Storage Device', and 'Use USB Storage Device'. The 'Use as USB Device' and 'Use MEAP Driver for USB Input Device' checkboxes are checked.
- External Interface:** This section contains a 'Restart Device' button and an 'Apply Setting Changes' button.
- Volume Settings:** This section contains a 'Volume Settings' button.
- Adjustment/Maintenance:** This section contains an 'Adjustment/Maintenance' button.

## 2.1.4 Enabling AMS

To manage the access rights to different features (Colour/ NB copy, copy right), the AMS mode (Access Management System) must be enabled on the multifunction.

You must connect to the administration page of the multifunction, then from the *Settings/Registration* menu then *License/Other*, select the configuration of the *ACCESS MANAGEMENT SYSTEM Settings* and check the box:



Then restart the multifunction to enable the mode.

## 2.2 Installation of the Gespage application

### 2.2.1 Manual installation

The installation must be performed from the web interface of the MFP.

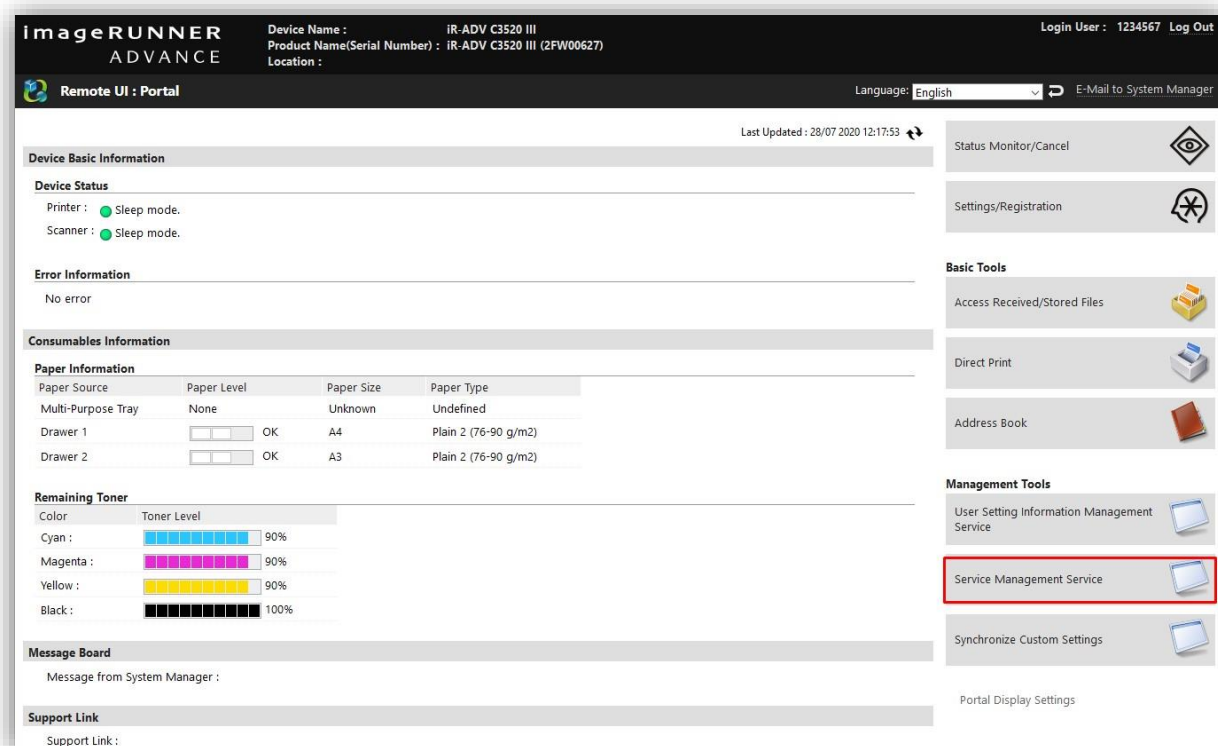
The two files **GespapeLogin.jar** and **Gespape.jar** must be installed on the multifunction.

Each of these files must be installed with the corresponding Canon licence to use the application (see § [2.1.1](#)).

Canon application files can be retrieved from the server where Gespage is installed, in the directory C:\Program Files\Gespape\GespapeCore\server\resources\medias\canon.

## Installation of the MEAP application

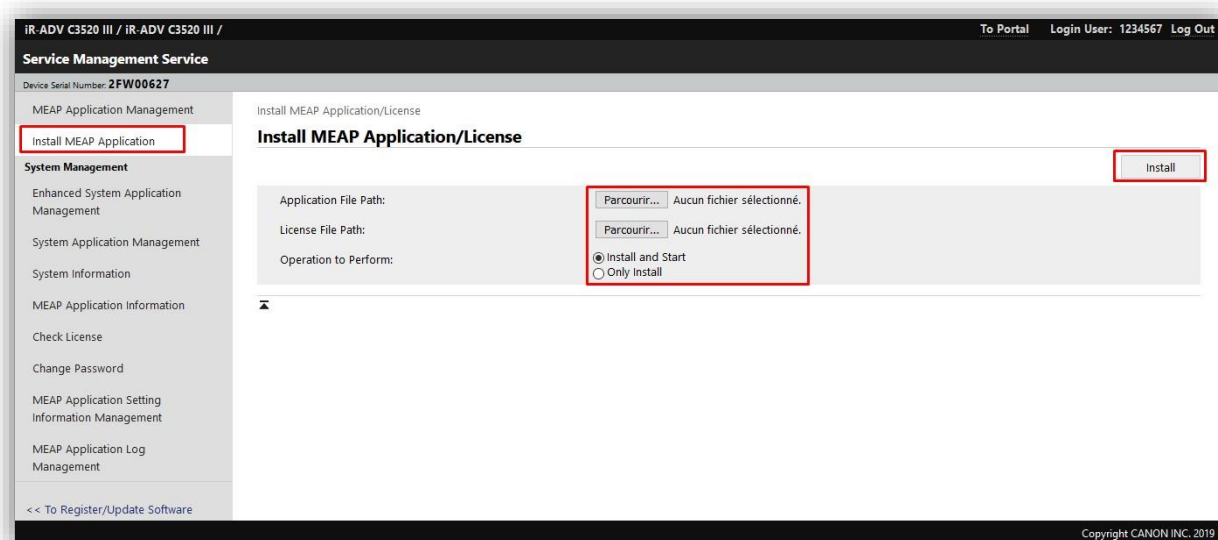
Move to the *Service Management Service (SMS)* menu via the copier administration page:



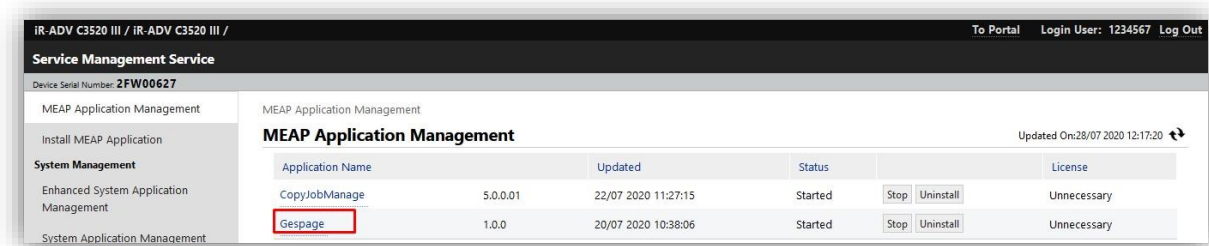
Then select the menu *Install MEAP Application*.

Select the **Gespage.jar** application file and the corresponding licence file.

The box *Install and Start* must also be checked then *Install*:

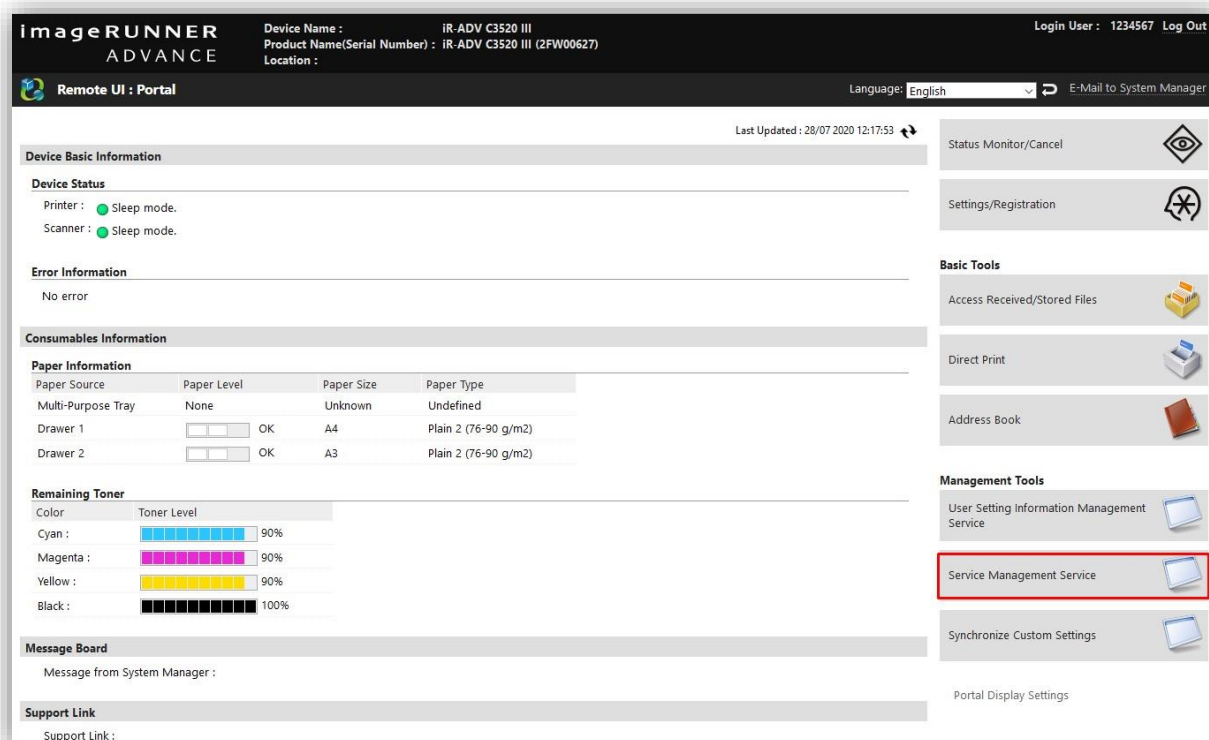


The MEAP Gespage application is now installed:



## Installation of advanced system applications

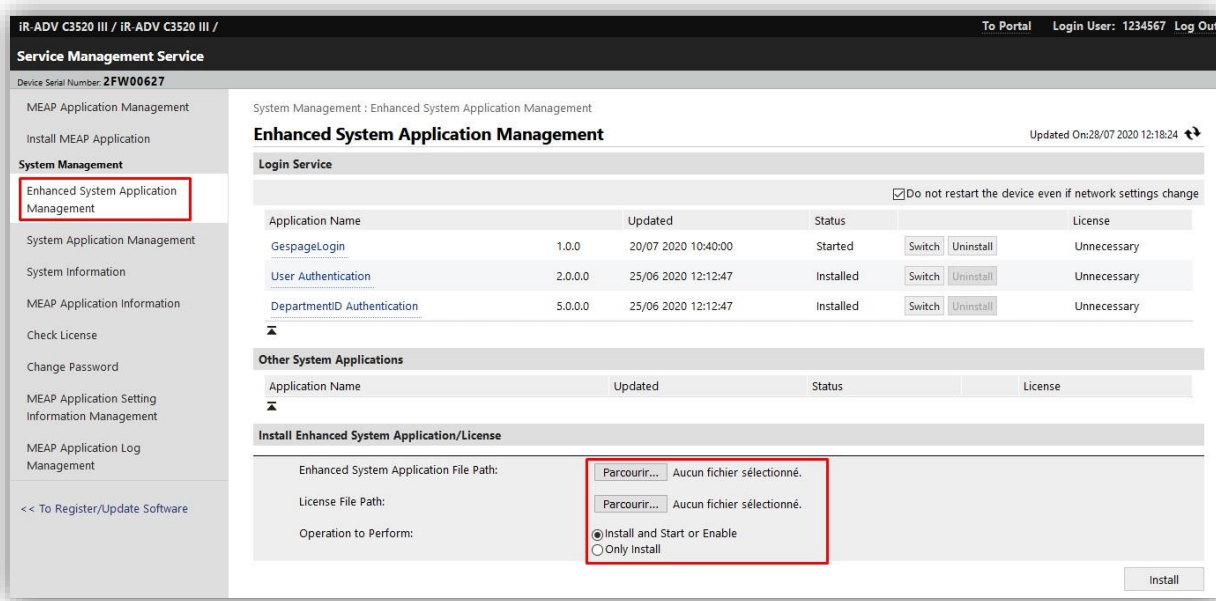
Move to the *Service Management Service (SMS)* menu via the copier administration page:



In the *Install an application/enhanced system license* menu, select the **GespageLogin.jar** application file and the corresponding licence file.

The box *Install and Start or Enable* must also be checked then *Install*.

You can register a new licence by just uploading and validating in this menu.



Finally, the multifunction must be restarted. The application is now installed.

## 2.3 Configuration of the application

### 2.3.1 Gespage address

After installing the application, the copier cannot access the Gespage server and displays the following screen:

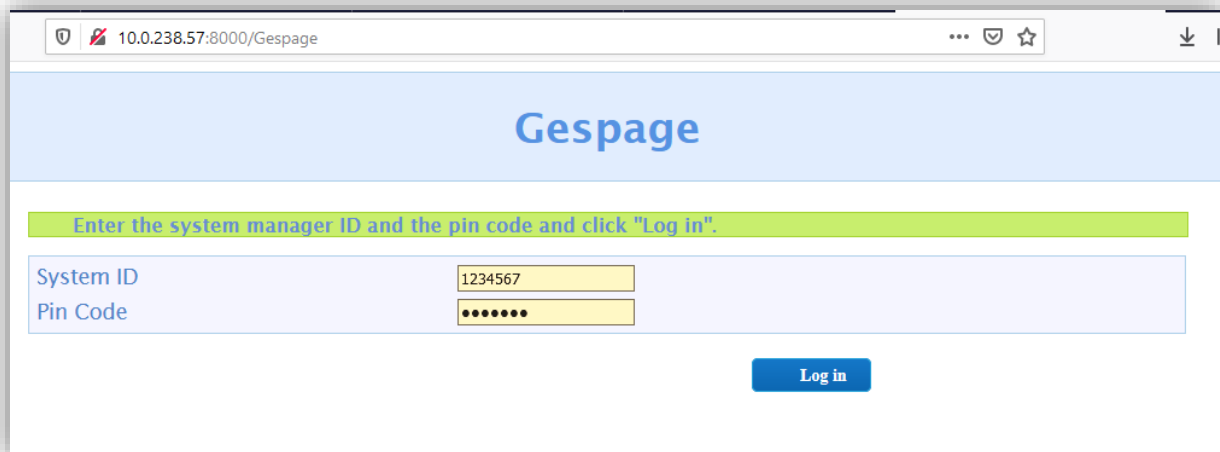


The application must therefore be configured in order to configure the communication with the Gespage server.

The application configuration menu is accessible with the following address:

[http://@ IP\\_COPIEUR:8000/Gespage](http://@ IP_COPIEUR:8000/Gespage)

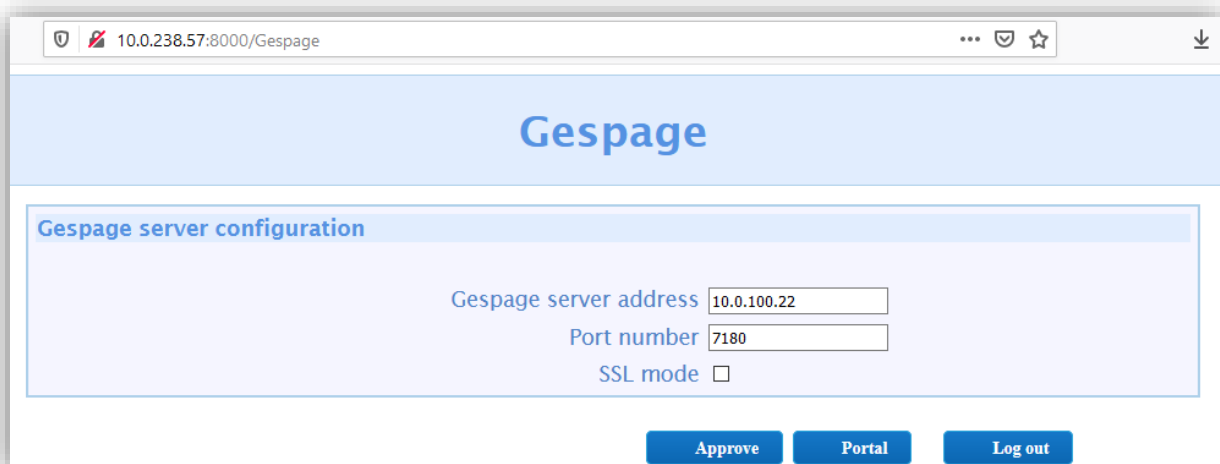
The username and password of the administrator account created previously on the multifunction, must then be entered (see § 2.1.2):




Then the configuration menu of the Gespage application is accessible.

The IP address of the Gespage server as well as the port of the application and the activation of SSL mode must be entered.

For information, port 7180 is the non-SSL port of the application, port 7181 is the SSL port:



Finally, after clicking on *Approve* then *Logout*, click on the device reset  button to refresh the multifunction screen.

## 2.3.2 Technician access to the MFP

By default, all Gespage accounts authenticate on the MFP with standard user's rights.

To connect to the MFP with administrator rights (for a technician), a local account must be created in Gespage with the mandatory name **admcanon**.

To be able to connect, a password in Gespage or a pin code must be created, depending on the authentication mode.

## 2.4 Gespage configuration

### 2.4.1 General configuration

#### 2.4.1.1 Global parameters

To enable dialogue between the eTerminals and the Gespage server, the address of Gespage server (IP or name) must be checked in the server global parameters (*Server / Global parameters*).

### 2.4.1.2 Licences

Make sure that the required Gespage licences are available. Information about your Gespage Server and the licences bought are available from *Server / Support / Licence*.

An eTerminal can be installed only if you have a Canon eTerminal licence available or if your server is in demo mode.

**View licence**

**License**

Signature: 27MG2WK1  
Mode: Active (under maintenance)  
Maintenance end date: 28 févr. 2025  
Qty of printers: 20  
Qty of physical printers: 8

Terminals	Mode	Details	Date	Number of devices
Canon eTerminal	Active (under maintenance)		28 févr. 2025	10

**License registration**

Register your license key

Aucun fichier sélectionné.

### 2.4.1.3 Network flows

Canon eTerminal communicates towards Gespage service on TCP ports 7180/7181.

## 2.4.2 Configuration of an eTerminal

Before configuring the Canon eTerminal, the printer corresponding to your MFP must first be added to your Gespage server.

Canon eTerminal is automatically registered in Gespage after manual installation and configuration of the Gespage application in the MFP.



### Identification of the eTerminal

#### Name

The eTerminal name must be filled in. The name is free but 2 identical names cannot be entered.

#### Serial number

The Canon eTerminal will be identified only by its serial number.

#### Comments

Comment of the eTerminal in Gespage. Comments are optional.

#### Print job release

Indicates whether printings sent to the MFP are kept as long as the user is not identified.

##### **1. Manually (Print2me function) login**

The user must always login to release his documents. This is the configuration to choose for getting a secured printing.

## 2. Automatically

The documents are printed as soon as they are received if the user's credit is sufficient, they are nevertheless accounted.

### Manual releasing condition

This parameter specifies the behaviour in the case of manual release of prints (Print2me).

#### **1. All jobs are automatically released after a user login**

Once the user is identified, all his printings are released from the queue.

#### **2. Jobs are released after a keyboard selection**

After user's authentication, a screen shows the user all pending prints and gives him the opportunity to release or delete one by one.

### Enable Operator release

This parameter enables operator printing at the MFP. Operator printing enables documents of other users to be released for certain authorized users (executive secretary, reprographic service). To set up the operators' accesses at level of users' accounts, please refer to the Gespage manual.

### Parameters for enabling embedded release options (available according to driver)

The following settings enable release options on the eTerminal.

**These parameters must be set in accordance with the printing policy and the default driver configuration.**

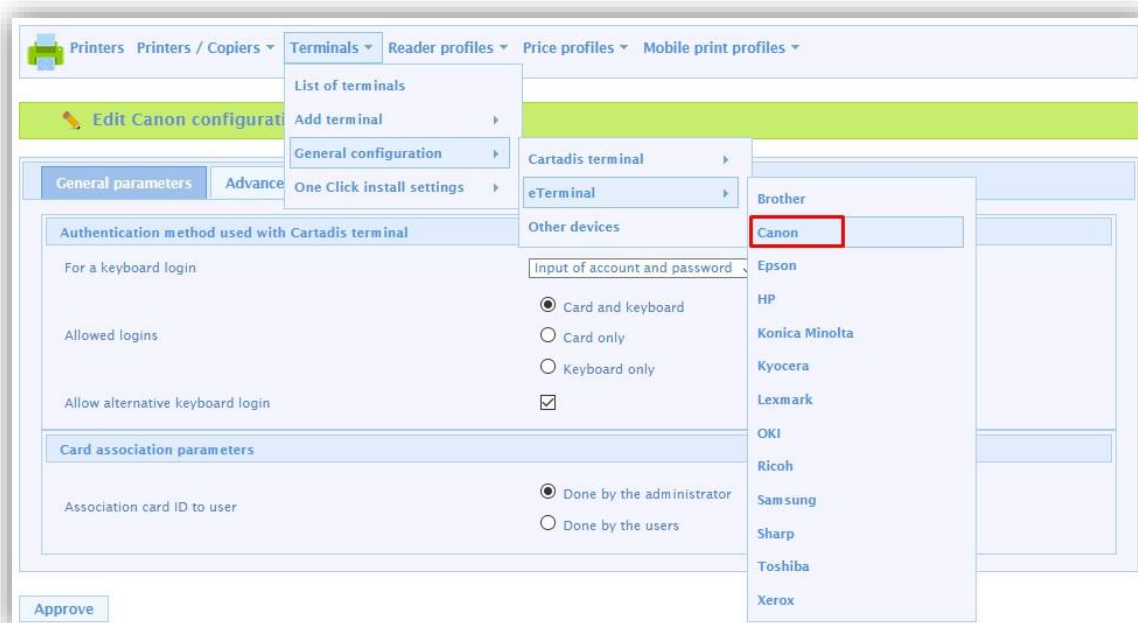
These forcings at the eTerminal level indeed aim to facilitate the selection of printing options for users and avoid them to use the more complex parameters of the driver.

**ATTENTION:** The availability of forcings may depend on the driver.

## 2.4.3 General configuration of the eTerminal

In the screen of Canon eTerminals general configuration, set up the parameters to be applied to all Canon eTerminals on the site.

The type of authorized login and the method of cards association are among these parameters



These parameters are described hereafter:

#### For a keyboard login

This parameter is used to enter the user login on the keyboard.

##### **1. Input of Gespage account only**

The user will enter his Gespage login.

##### **2. Input of account and password**

The user will enter his Gespage login and his password.

##### **3. Input of the print code**

The user will enter his print code.

#### Allowed logins

This parameter is used to select the peripheral for login.

##### **1. Card and keyboard**

The user login can be done by card or keyboard. If no card reader is connected, keyboard login is the only option.

##### **2. Card only**

The keyboard will be disabled. Login will be carried out by card only.

##### **3. Keyboard only**

The card reader will be disabled. Login will be carried out by keyboard only.

For card login, the Cartadis TCM3 or TCM4 contactless card readers are recommended.

**NOTE:** The card reader has to be directly connected in USB on the MFP.



#### Allow alternative keyboard login

This parameter enables two keyboard login modes to be activated on the MFP at the same time (job login enabled by user / password in addition to the print code).

#### Association card ID to user

At the first user's card use and if the card number is not known by Gespage, a method of association of the card must be defined. It enables the user's card id to be stored in the Gespage account. This association only applies at the first card swipe.

**1. Done by the administrator**

All the card numbers of the users have to first be configured in Gespage. The initialization can be carried out by the administrator or the LDAP synchronization mechanism.

**2. Done by the users**

When a user will use an unknown card, he will have the possibility of authenticating by the keyboard at the login screen. The self-association of the card will be required only once during the card lifetime.

# 3. Use

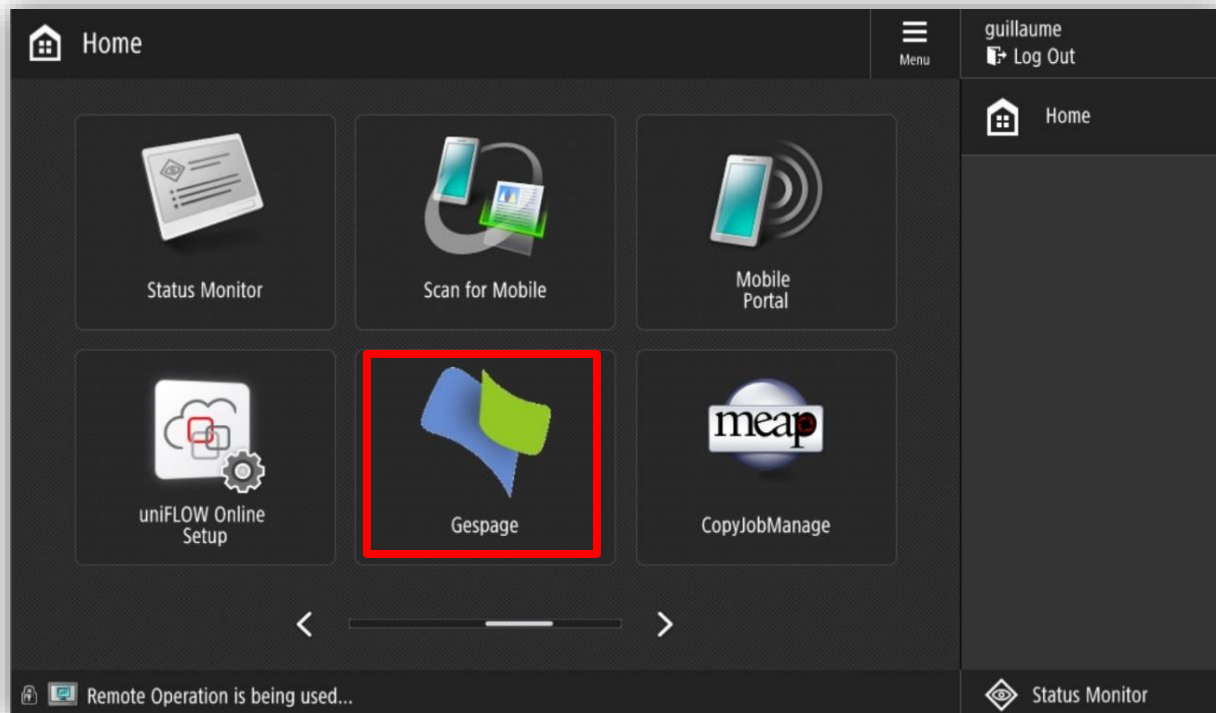
---

## 3.1 Examples of user menus

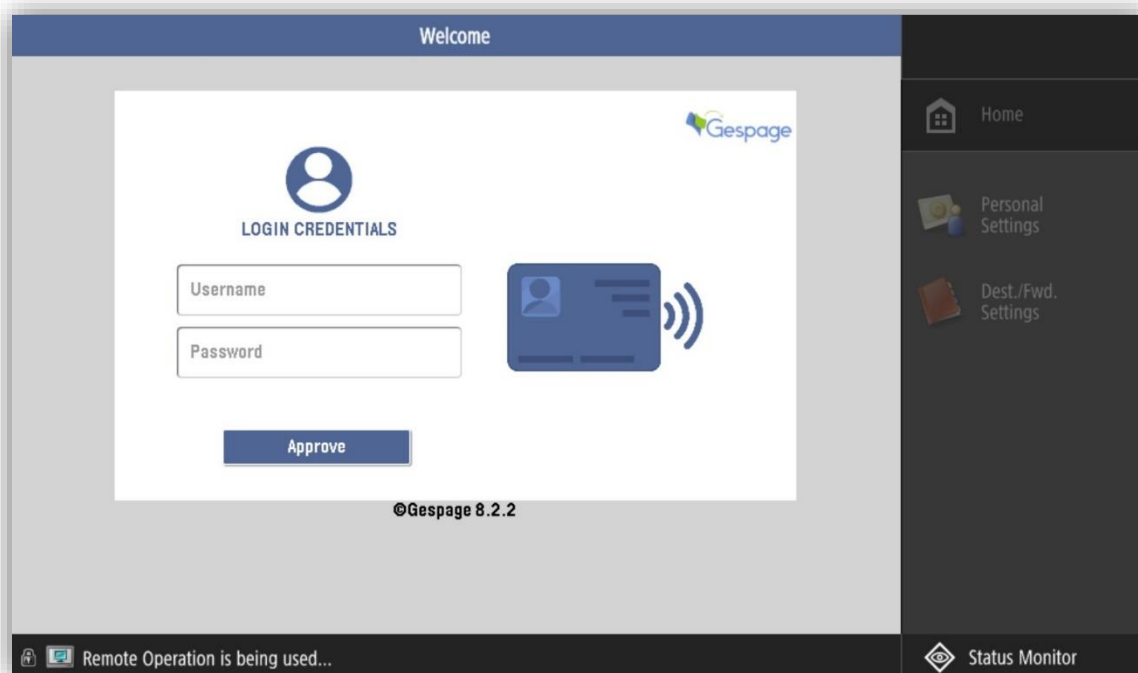
### 3.1.1 User login

The user must authenticate to access to the MFP services. After authentication, the user gets direct access to the multifunction menu screen.

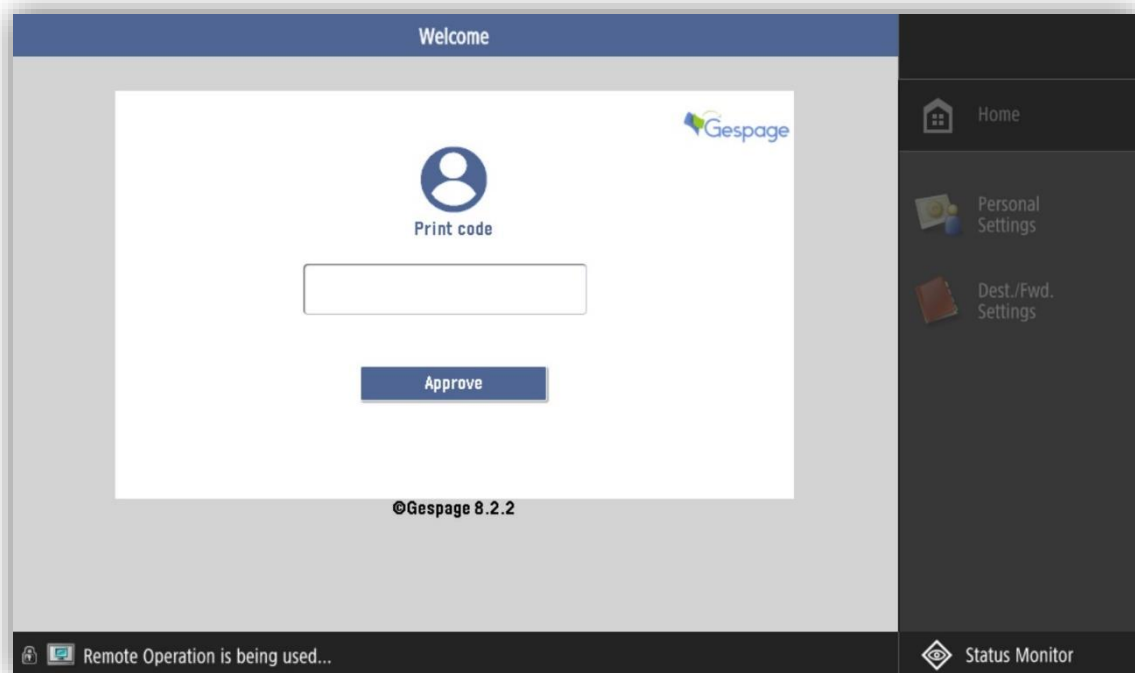
The pending prints are accessible by pressing the Gespage button in the menu.



Home screen with authentication by login / password

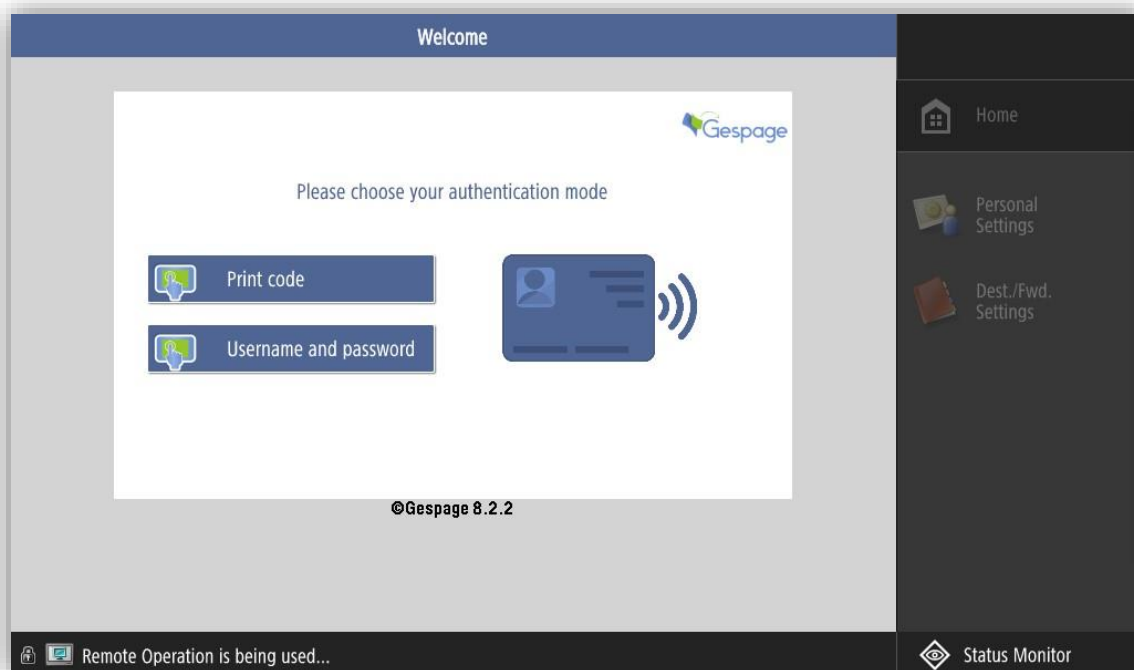


Home screen with authentication by print code



Home screen with authentication by card



Mixed login by keyboard



### 3.1.2 Screen of print release

The print release screen enables pending prints to be selected for printing, deletion or modification.

At login, the list of pending prints is displayed

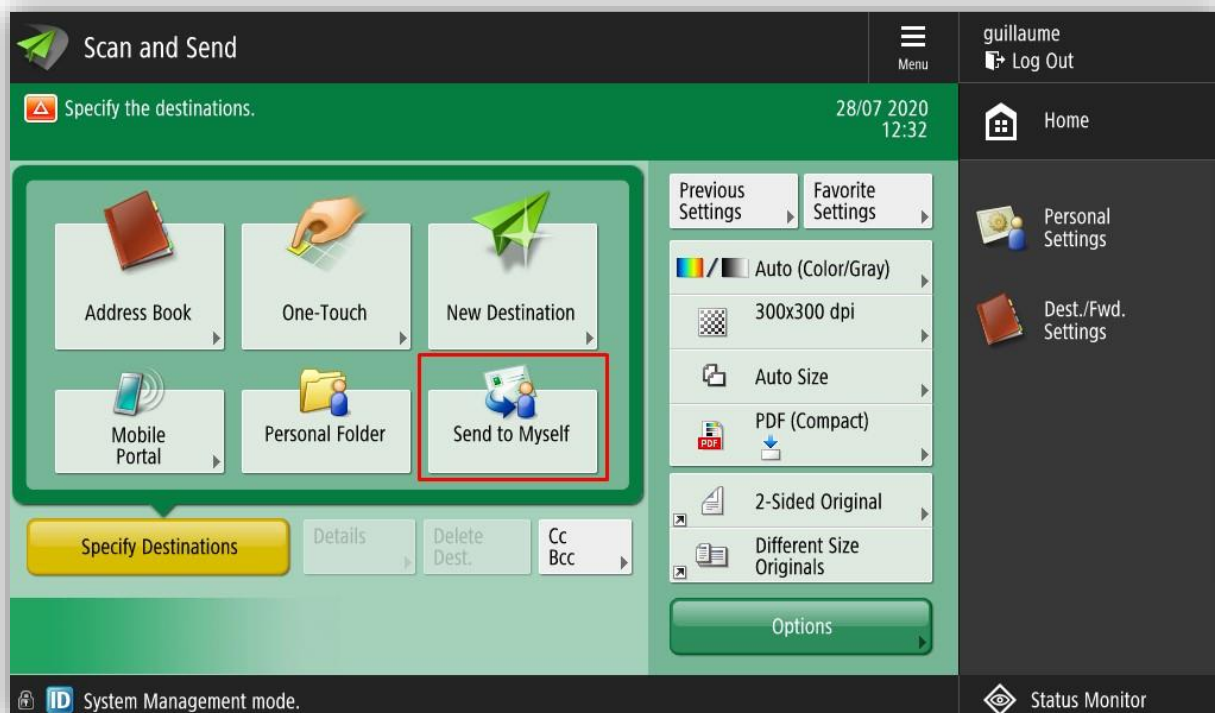


Some printing options can be modified. The possible modifications are:

- force the document in Black and White
- force the document in duplex
- modification of the number of copies of a document.

### 3.1.3 Scan to personal e-mail

The eTerminal automatically configures the user's email when it is authenticated on the MFP. In the scans menu, choose *Send to Myself*:



The email address is then retrieved directly from the Gespage database:

